

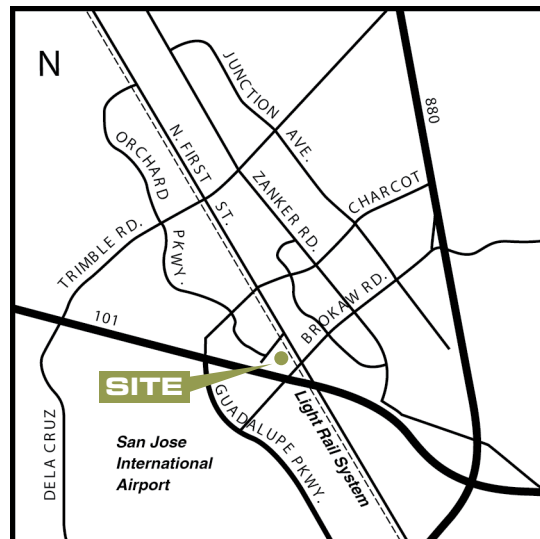
OFFICE SPACE

±1,255 - 3,539 Square Feet



2107 North First Street San Jose

- Prestigious "North First Street" location
- Fully renovated bathrooms and common areas
- Attractive 6-story 100,420 SF class "A" building with generous glass lines and on-site conference room
- Great regional access via Highway 101 and I-880 @ Brokaw Rd./Airport Pkwy exit
- Light rail station adjacent to site provides convenient commuter access from San Jose, Santa Clara, Sunnyvale and Mountain View
- Close to San Jose International Airport, hotels, retail and restaurant services
- Close proximity to eBay
- Convenient on-site parking of 3.2/1,000



For more information, contact:

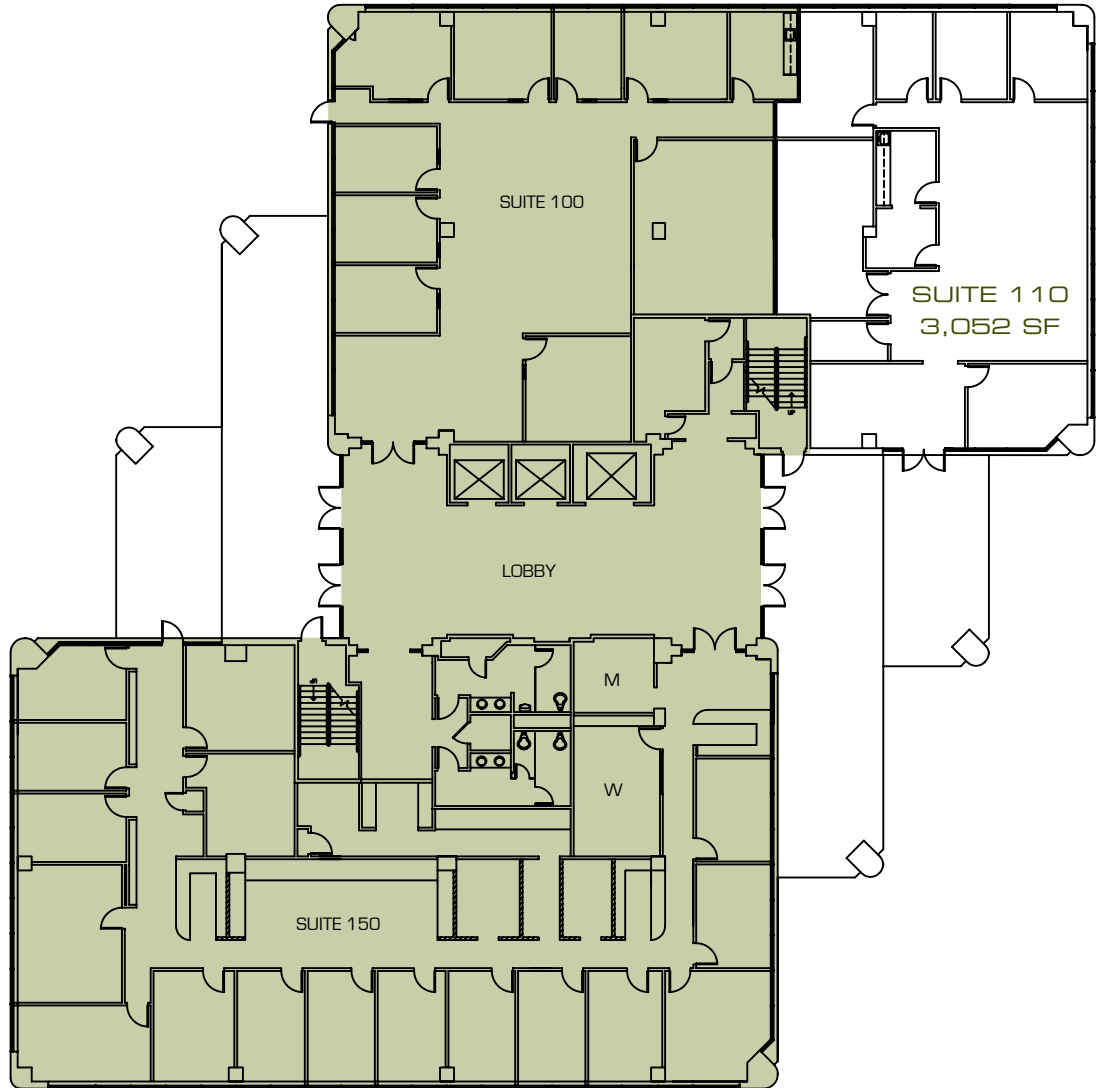
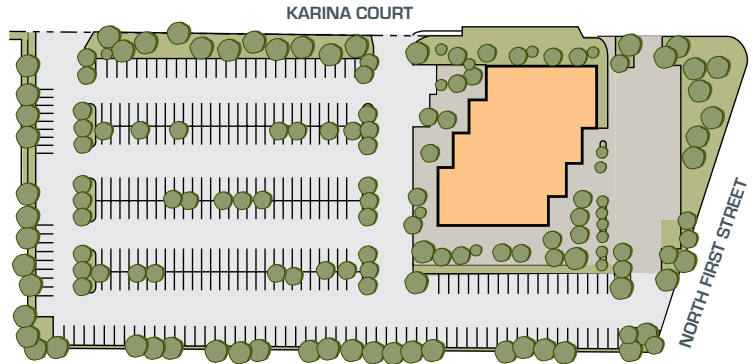
Byron Renfro: 408-955-1402

Lic #01324378

FOR LEASE

For Lease

- Suite 110: 3,052 S.F.



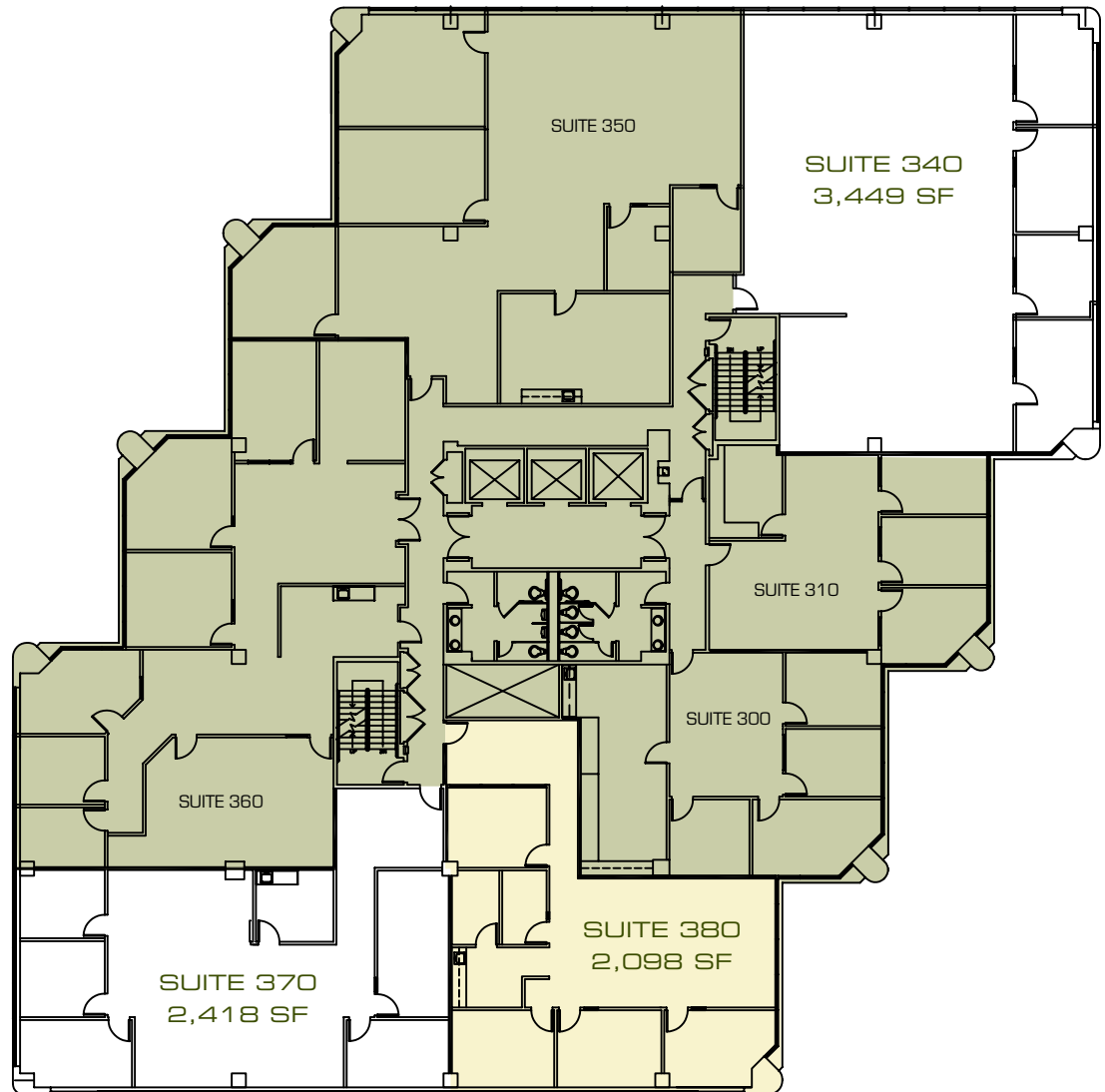
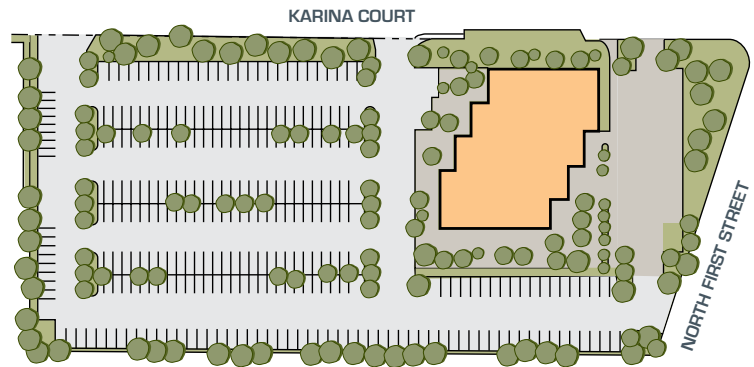
2107 NORTH FIRST STREET . FIRST FLOOR

For Lease

- Suite 340: 3,449 S.F.
- Suite 370: 2,418 S.F.

For Sublease

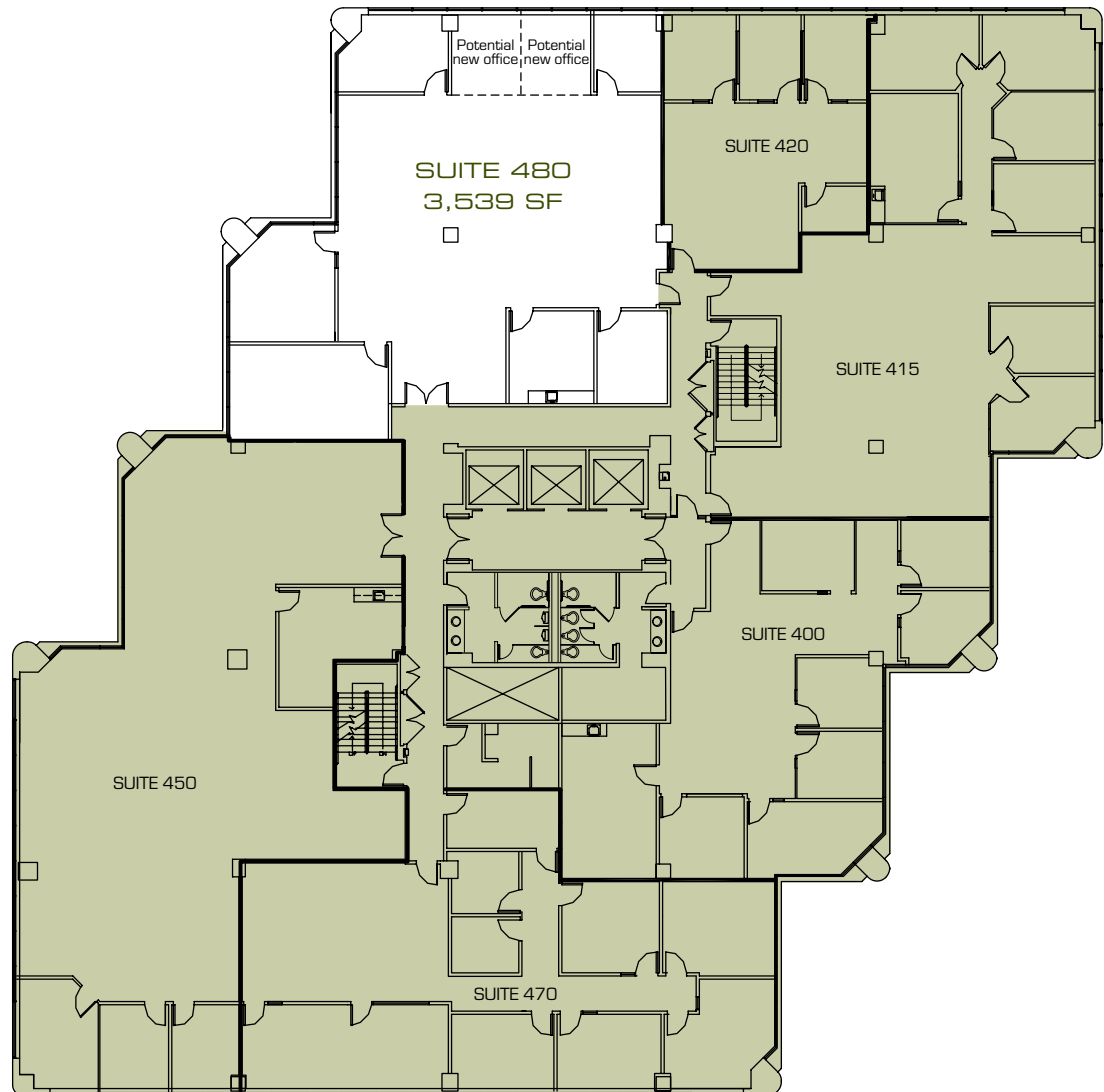
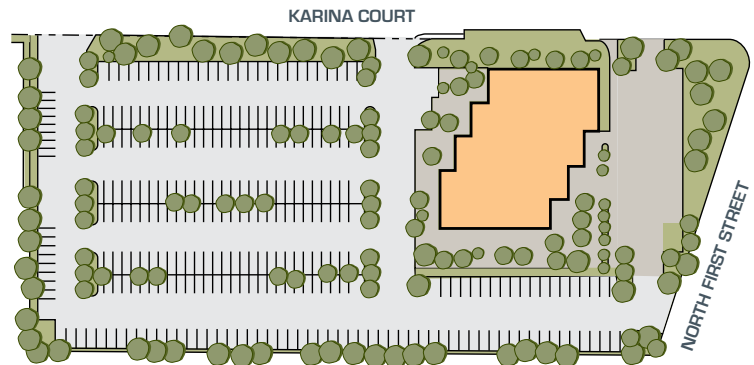
- Suite 380: 2,098 S.F.



2107 NORTH FIRST STREET . THIRD FLOOR

For Lease

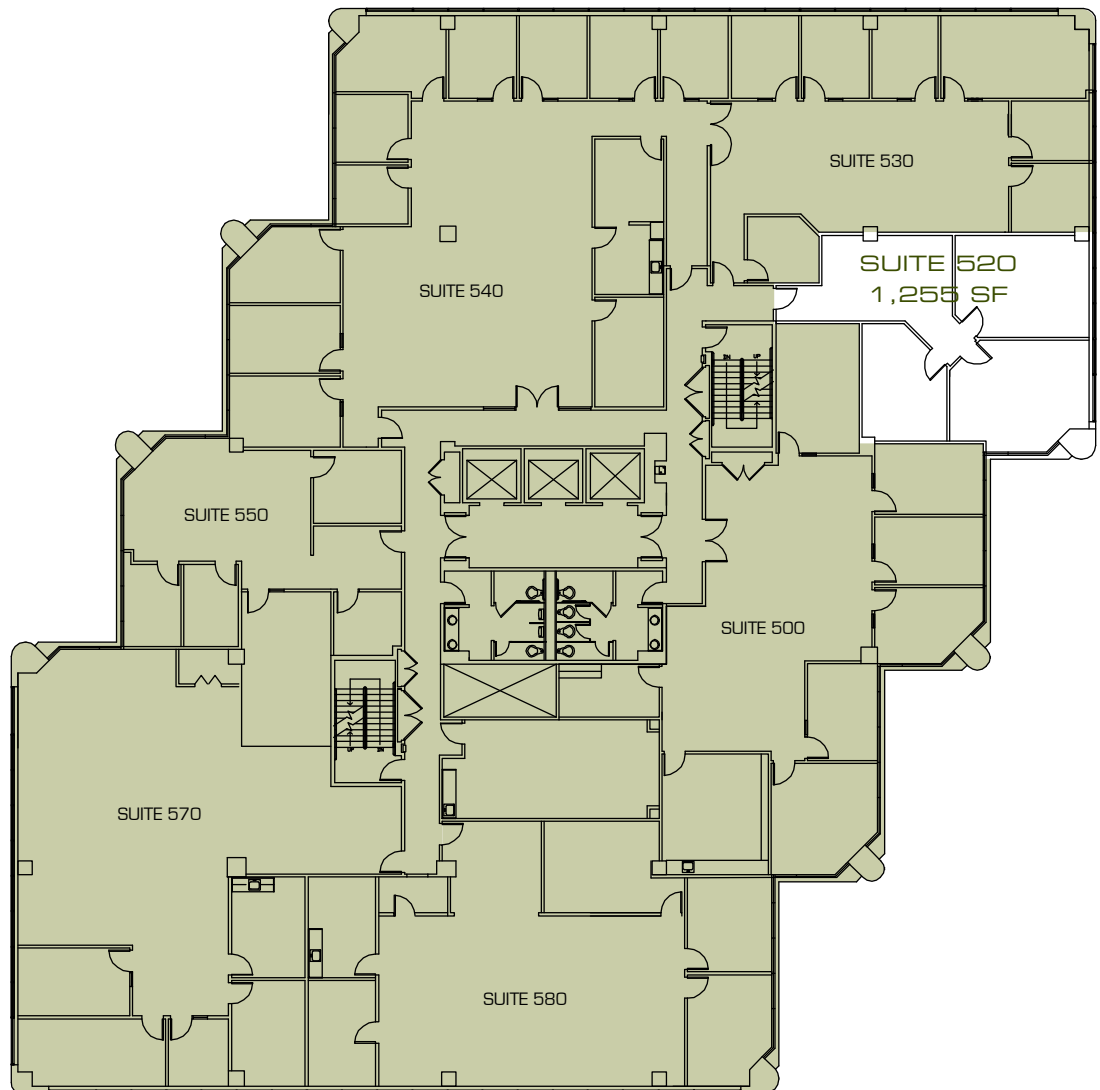
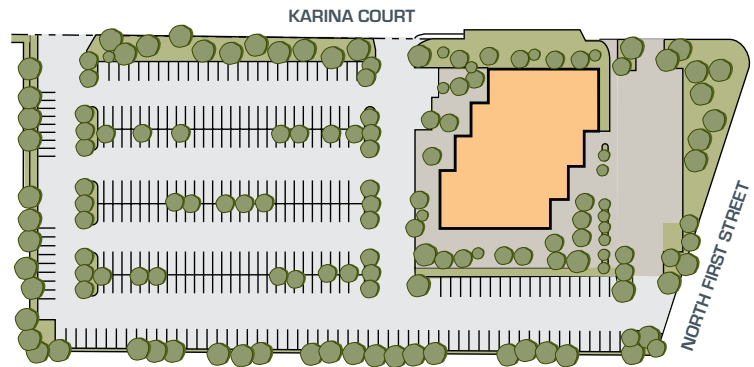
- Suite 480: 3,539 S.F.
Available 3/31/2011



2107 NORTH FIRST STREET . FOURTH FLOOR

For Lease

- Suite 520: 1,255 S.F.



2107 NORTH FIRST STREET . FIFTH FLOOR